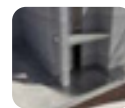


"Venezia® Vortex"



Sealand Electric Pumps South Africa

44 Agaat Str, Nirvana Industrial, Polokwane, Limpopo Province, South Africa, 0699

+27 87 150 2772 +27 86 647 3047 info@sealand.co.za www.sealand.co.za

SUBMERSIBLE DRAINING ELECTRIC PUMPS

The submersible draining pumps with open impeller of the series VENEZIA® Vortex have been developed with the most advanced and sophisticated engineering and industrial design systems. The particular form, the integrated automatic switch, the possibility to operate also if partially submerged, the total absence of screws and the particular compound polymers used, make Venezia® one of the most innovative and technological advanced pumps available on the market.

The VENEZIA® Vortex have been design to pump waste water, dirty water or sewage water, but not aggressive for the pump's materials. Liquid temperature not higher than 35 °C. (CEI EN 60335-2-41). Max. free passage of suspended solids up to Ø 25 mm.

The VENEZIA® Vortex may work also partially immersed.

TECHNICAL FEATURES

- Pump body ,outer motor casing and base filter: Syntegum 1720
- Impeller : in Dynaril
- Bearings bracket: in die casting aluminium UNI 5076
- Motor body: stainless steel Aisi 304
- Pump shaft: stainless steel Aisi 420 F
- Pump's side mechanical seal: carbon-ceramics
- Motor's side seal: lip ring in NBR
- 10 m H07RN-F feeding cable
- Max. immersion 5 m

MOTOR

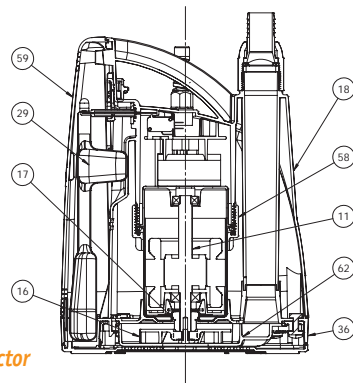
- Two poles induction rewindable motor, cooled by the pumped liquid, with protection IP 68, class F insulation.
- Single-phase feeding with incorporated motor protector and capacitor permanently connected.
- Continuous duty.



Innovation design and material international Patent

Passage of solid bodies Ø 25 mm
 Built in non return valve
 Built in float switch
 Exceptional performance

Quick cable coupling watertight connector



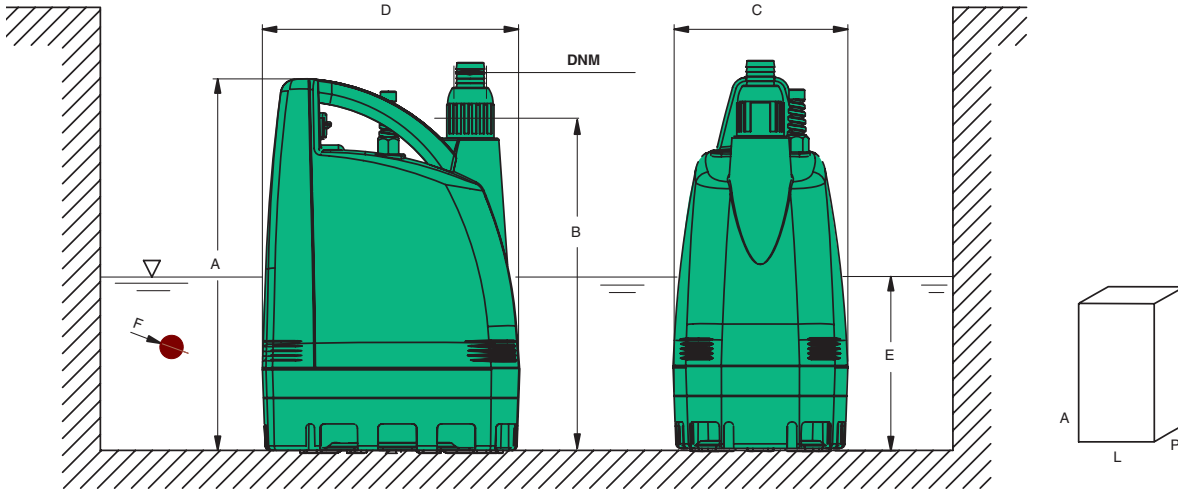
SPARE PARTS LIST

- 11 Pump shaft + rotor
- 16 Impeller
- 17 Mechanical seal
- 18 Pump body
- 29 Float switch
- 36 Filter base
- 58 Motor fixing ring nut
- 59 Float switch cover
- 62 Internal diffuser

50 Hz

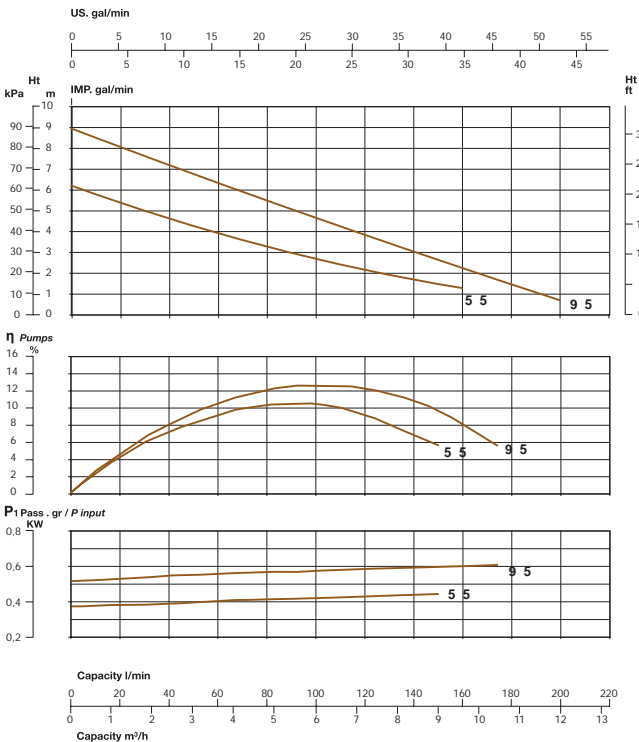
TYPE Single-phase	Nominal power		Input power [W]	Capacitor 450 V max [μF]	Input current [A]	Capacity												
	kW	HP				Total head (m W.C.)												
			a	H [m]														
Venezia Vortex 525	0.37	0.5	440	8	2.1	0	0.6	1.2	1.8	3	4.2	5.4	6	7.2	8.4	9.6	10.8	12
Venezia Vortex 925	0.59	0.8	610	14	2.7	0	10	20	30	50	70	90	100	120	140	160	180	200

a) ~ Single-phase 230 V



TYPE	DIMENSIONS [mm]							PACKING [mm]			WEIGHT [kg]
	A	B	C	D	E	F	DNM	A	L	P	
Venezia 525 Vortex	400	365	175	270	120	∅ 25	1"1/4	430	280	230	5,8
Venezia 925 Vortex	400	365	175	270	120	∅ 25	1"1/4	430	280	230	7,8

min⁻¹ ~ 2900



Notes

.....

.....

.....

.....

.....

.....

.....

.....

.....

.....